



OUR GLOBAL
COMPETENCE
CENTRES

 APOLLO DISPLAY
TECHNOLOGIES



 DISTEC



 DISPLAY
TECHNOLOGY



Datasheet

Distec

Compact Panel

CP-P320HVN02.0-A01

DI-05-013

Version 1.3

The information contained in this document has been carefully researched and is, to the best of our knowledge, accurate. However, we assume no liability for any product failures or damages, immediate or consequential, resulting from the use of the information provided herein. Our products are not intended for use in systems in which failures of product could result in personal injury. All trademarks mentioned herein are property of their respective owners. All specifications are subject to change without notice.



Table of Contents

1	Revision History	3
2	Description	4
3	Characteristics	4
3.1	Further Specifications.....	4
3.1.1	TFT Controller	4
3.1.2	TFT-Display	4
4	Mechanical Drawing	5
5	Optional Accessories	6
5.1	Kit Input Connector Board including cable set	6
5.2	Single Cables (Power Cable, DVI, VGA, RS232 interface)	7
5.3	External (4+1) Button OSD Keypad	8



1 Revision History

Date	Rev.No.	Description	Page
20.06.2017	1.0	Initial version	All
27.06.2017	1.1	Support for IR-Remote removed	8
12.10.2017	1.2	Datasheet link updated; Last page updated	4, 9
05.12.2018	1.3	Power supply cable changed, power supply added	7+8



2 Description

Distec's Compact Panel Series is an open frame design which is based on the PrismaCompact-Media. This modular based construction allows an easy mounting through a spread TFT-Display assortment.

The PrismaCompact-Media providing a RGB, HDMI/DVI, DP, USB/RS232 interface and supports resolutions from VGA up to WUXGA at a maximum of 85Hz refresh rate with automatic up- and downscaling function to full screen size, reverse scan and much more.

Our CP-P320HVN02.0-A00 32" Full HD LED Compact Panel with a high quality screen image and is designed for a wide temperature range usage and it gives a lot of convenience to the user in installing various applications such as gaming, amusement, industry and so on and accessing the GUI (Graphic User Interface).

3 Characteristics

Items	Unit	Specification
Type	LCD TFT	P320HVN02.0
Screen Diagonal	[inch]/[mm]	31.5 / 801.3
Physical Size H x V x D	[mm]	719.2 x 413.7 x 26.3
Active Area H x V	[mm]	698.4 x 392.85
Pixels H x V		1920 (x3) x 1080
Supported Colors		16,7M (8bit)
Brightness	[cd/m ²]	500
Viewing Angle		6h
Nominal Input Voltage	[V]	12 Prisma / 24 Backlight
Typical Power Consumption	[W]	43 typ. (7 LCD / 36 Backlight)
Weight	[kg]	4,9 max.
Electrical Interface		RGB, TMDS, DisplayPort, UART
Temperature Range T _{OP}	[°C]	0...+50

3.1 Further Specifications

3.1.1 TFT Controller

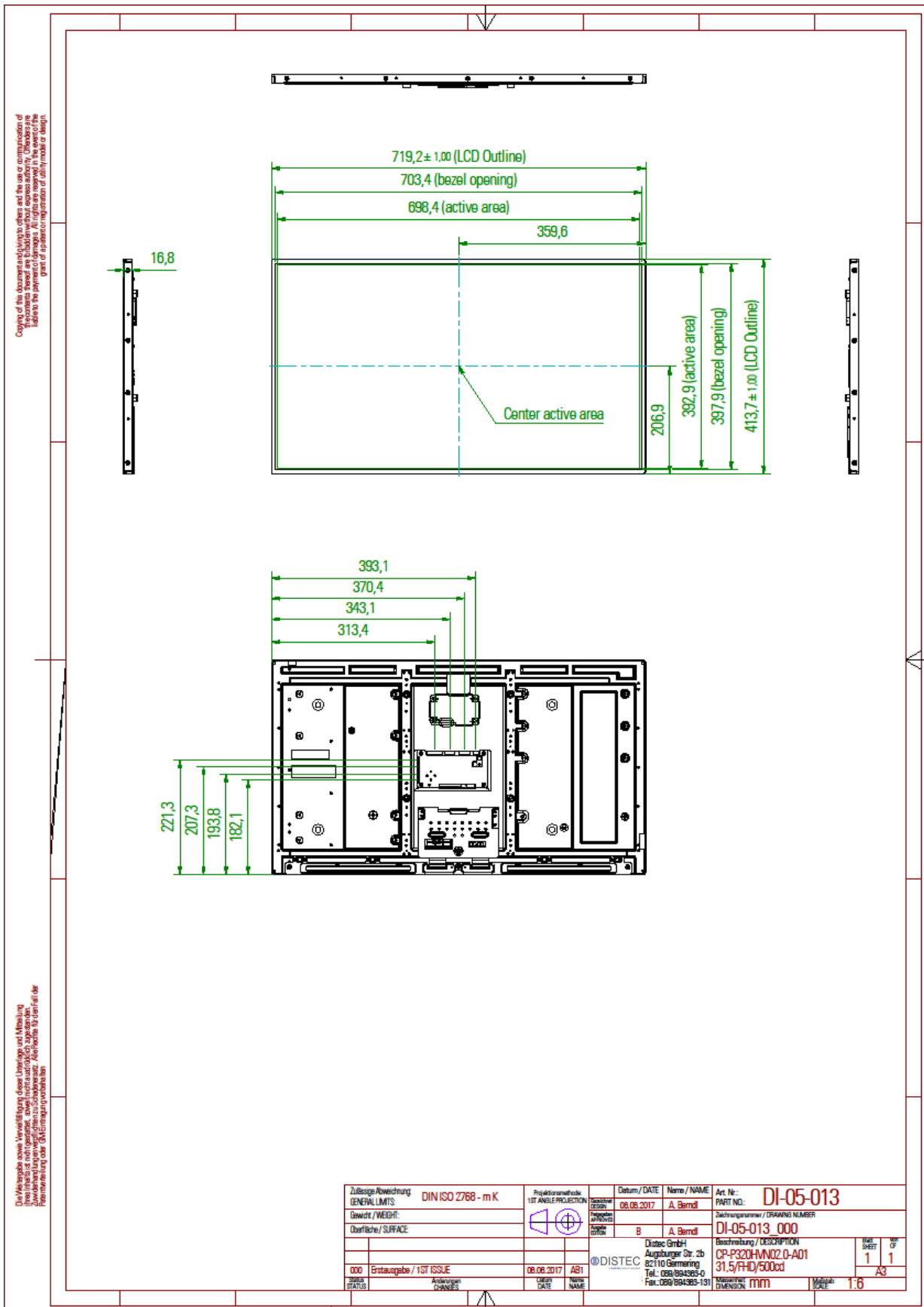
Distec PrismaCOMPACT-Media [Datasheet PrismaCOMPACT-Media](#)

3.1.2 TFT-Display

P320HVN02.0 [Datasheet P320HVN02.0](#)



4 Mechanical Drawing

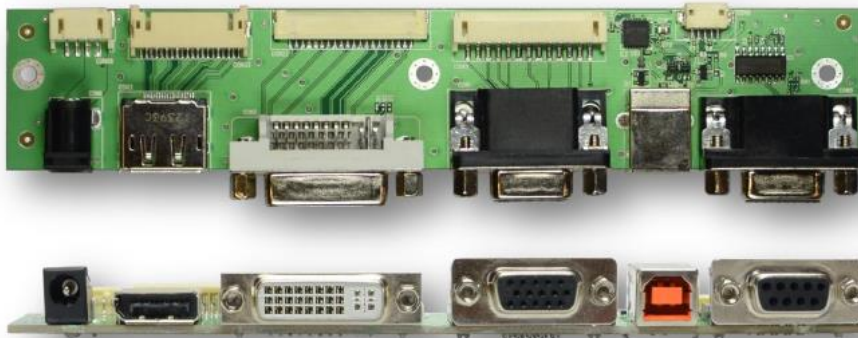




5 Optional Accessories

5.1 Kit Input Connector Board including cable set

- Connectors: Power-Jack, DP, DVI-I, VGA DSUB15, [USB-B/DSUB9] (Serial interface for firmware update and remote control)
- IF 396 cable connection set 20cm (Power, DP, DVI, RGB, UART)



ZU-02-396 IF396-00 RDDP-UR Input Board P-C Media



Order number:

KI-90-008 Kit CP-Input Board IF396 incl. cables

(Kit including the following components)

- ZU-02-396 IF396-00 RDDP-UR Input Board P-C Media
- KA-30-365 Cable RGB IF396/PrismaCompactMedia 20cm
- KA-30-363 Cable DVI IF396/PrismaCompactMedia 20cm
- KA-30-364 Cable DP IF396/PrismaCompactMedia 20cm
- KA-30-361 Cable POW IF396/PrismaCompactMedia 20cm
- KA-30-362 Cable UART IF396/PrismaCompactMedia 25cm



5.2 Single Cables (Power Cable, DVI, VGA, RS232 interface)

RS232 interface + cable for Remote Control and Firmware update

ZU-02-370 IF370-00-R10programingadap.Pris./Art.NET
KA-30-101 Cable Service/Debug ArtistaNET/Pris 80cm



VGA Cable

KA-03-027 VGA Cable LTM150XI/170EI female 80cm



DVI Cable

KA-30-382 Cable DVI-D Female / PCompactMedia 80cm



HDMI Cable

KA-30-577 Cable HDMI-A Male / PCompactMedia 80cm



Power Supply Cable

KA-30-749 Cable DC Power Jack 2,5mm/PHR-4 800mm



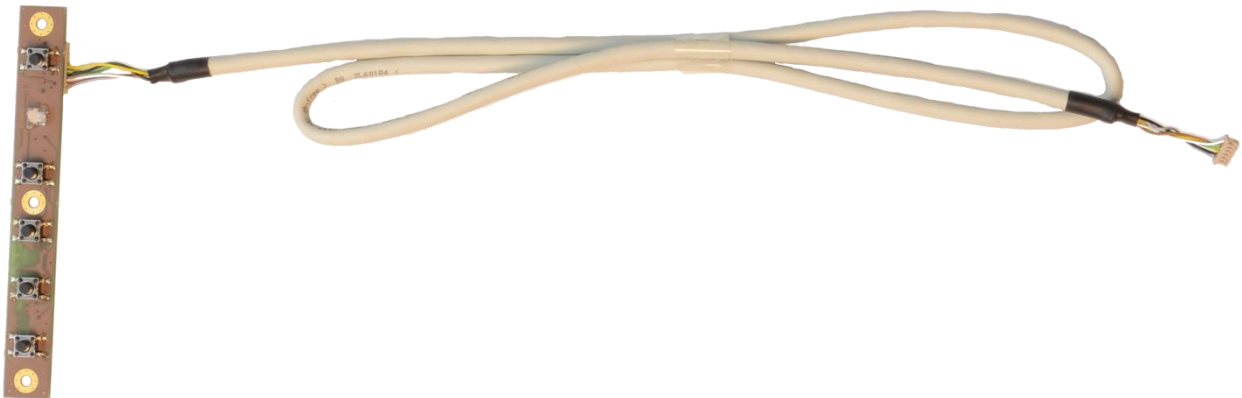


Power Supply

NT-01-062 AC Adapter CWT KPL-060F-VI(C14/12V5A)2,1



5.3 External (4+1) Button OSD Keypad



External (4+1) Button OSD Keypad:

- ZU-02-398 IF398-00-OSD-Board-Universal
- KA-30-394 OSD-Cable IF398

Our company network supports you worldwide with offices in Germany, Austria, Switzerland, the UK and the USA. For more information please contact:

Headquarters

Germany



FORTEC Elektronik AG

Lechwiesenstr. 9
86899 Landsberg am Lech

Phone: +49 8191 91172-0
E-Mail: sales@forteca.de
Internet: www.forteca.de

Fortec Group Members

Austria



FORTEC Elektronik AG

Office Vienna

Nuschinggasse 12
1230 Wien

Phone: +43 1 8673492-0
E-Mail: office@fortec.at
Internet: www.fortec.at

Germany



Distec GmbH

Augsburger Str. 2b
82110 Germering

Phone: +49 89 894363-0
E-Mail: info@distec.de
Internet: www.distec.de

Switzerland



ALTRAC AG

Bahnhofstraße 3
5436 Würenlos

Phone: +41 44 7446111
E-Mail: info@altrac.ch
Internet: www.altrac.ch

United Kingdom



Display Technology Ltd.

Osprey House, 1 Osprey Court
Hichingbrooke Business Park
Huntingdon, Cambridgeshire, PE29 6FN

Phone: +44 1480 411600
E-Mail: info@displaytechnology.co.uk
Internet: www.displaytechnology.co.uk

USA



Apollo Display Technologies, Corp.

87 Raynor Avenue,
Unit 1 Ronkonkoma,
NY 11779

Phone: +1 631 5804360
E-Mail: info@apolloDisplays.com
Internet: www.apolloDisplays.com