



**DLF/DLH1968-U**

**19" TFT LCD, LED Backlight,1600nits,SXGA(1280x1024),Wide Temp.**

19" TFT LCD panel, built-in 1600 nits brightness for sunlight readable LCD display, high transmittance color filter, high transmission polarizing plates, Low Power Consumption, suitable for kiosk, advertising, POS, marine, transportation, gaming, studio display, gas pump.

**Key Features**

- Brightness: 1600nits
- LED Backlight
- SXGA(1280x1024) High Definition
- High Shock & Vibration Resistance
- Low Power Consumption
- High Uniformity
- Low EMI Noise
- Wide Dimming
- Wide Temp.: -30~85°C
- Life Expectancy



**Specifications**

V1

Model No.	DLF1968-U	DLH1968-U
<b>Description</b>	19" TFT LCD, LED Backlight ,1600nits,SXGA(1280x1024),Wide Temp.	
<b>Display Area (mm)</b>	376.32(H) x 301.06(V)mm	
<b>Brightness</b>	1600 cd/m <sup>2</sup>	
<b>Resolution</b>	1280x1024 (SXGA)	
<b>Contrast Ratio</b>	1000 : 1	
<b>Pixel Pitch (mm)</b>	0.294(H) x 0.294(V)	
<b>Viewing Angle</b>	+85°~ -85°(H), +80°~ -80°(V)	
<b>Display Colors</b>	16.7M	
<b>Response Time (Typical)</b>	10ms	
<b>Power Consumption</b>	40/43W	
<b>Dimensions (mm)</b>	396x324x14.5mm	
<b>Weight (Net)</b>	2.45kg	
<b>LED Driving Board</b>	LID19A	
<b>Control Board (Optional)</b>	<input type="checkbox"/> AD2662GDVAR	
<input type="checkbox"/> AD2662GD	VGA+DVI	
<input type="checkbox"/> AD2662GDVAR	VGA+DVI (Optional AV/ S-Video/ Component / Audio)	
<b>F / R Control Button</b>	<input type="checkbox"/> 5 Key <input type="checkbox"/> 4 Key	
<input type="checkbox"/> 5 Key	Power Switch, Menu, Select (+,-), Auto	
<input type="checkbox"/> 4 Key	Power Switch, Menu, Select (+,-),	
<b>OSD Menu</b>	Brightness, Contrast, H/V Position, Color, Phase, Clock...	
<b>Optional</b>	<input type="checkbox"/> AOT <input type="checkbox"/> Touch Screen	

Specifications are subject to change without notice.

All brands or product names are trademarks or registered trademarks of their respective companies.

**DLF**= Panel + LED Driving Board

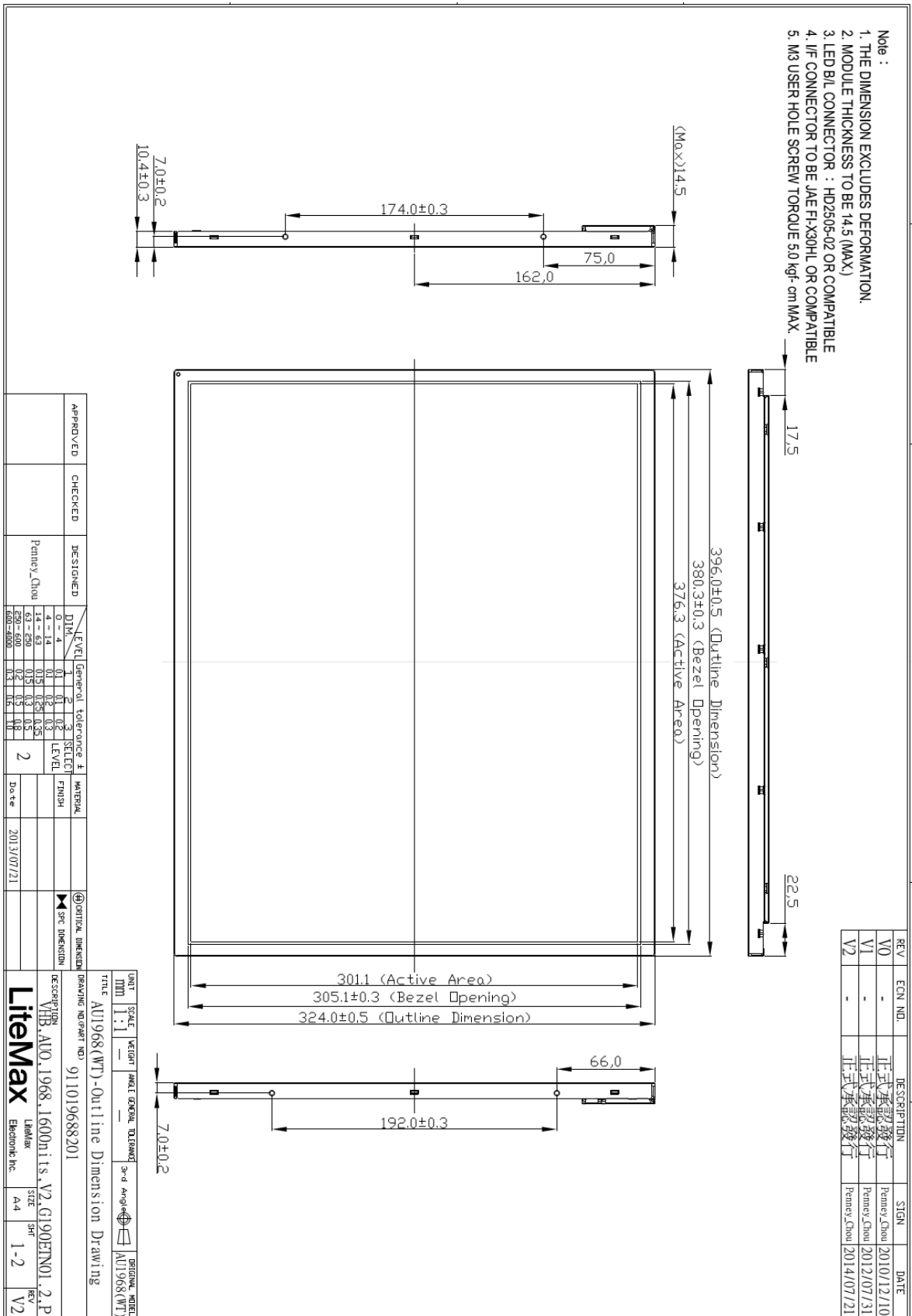
**DLH**= Panel + LED Driving Board + Control Board



# Mechanical Drawing

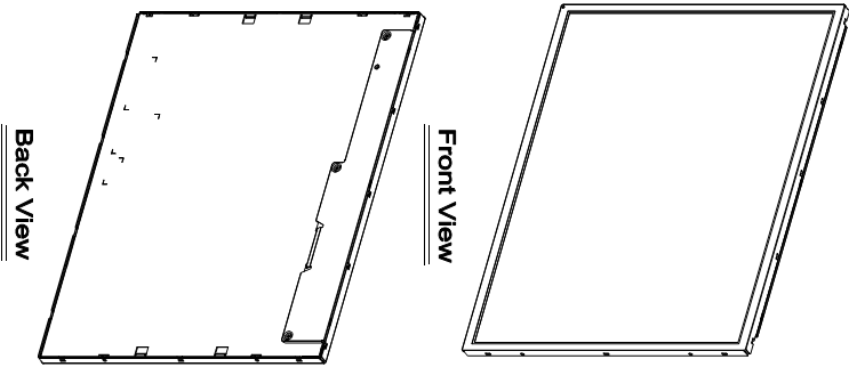
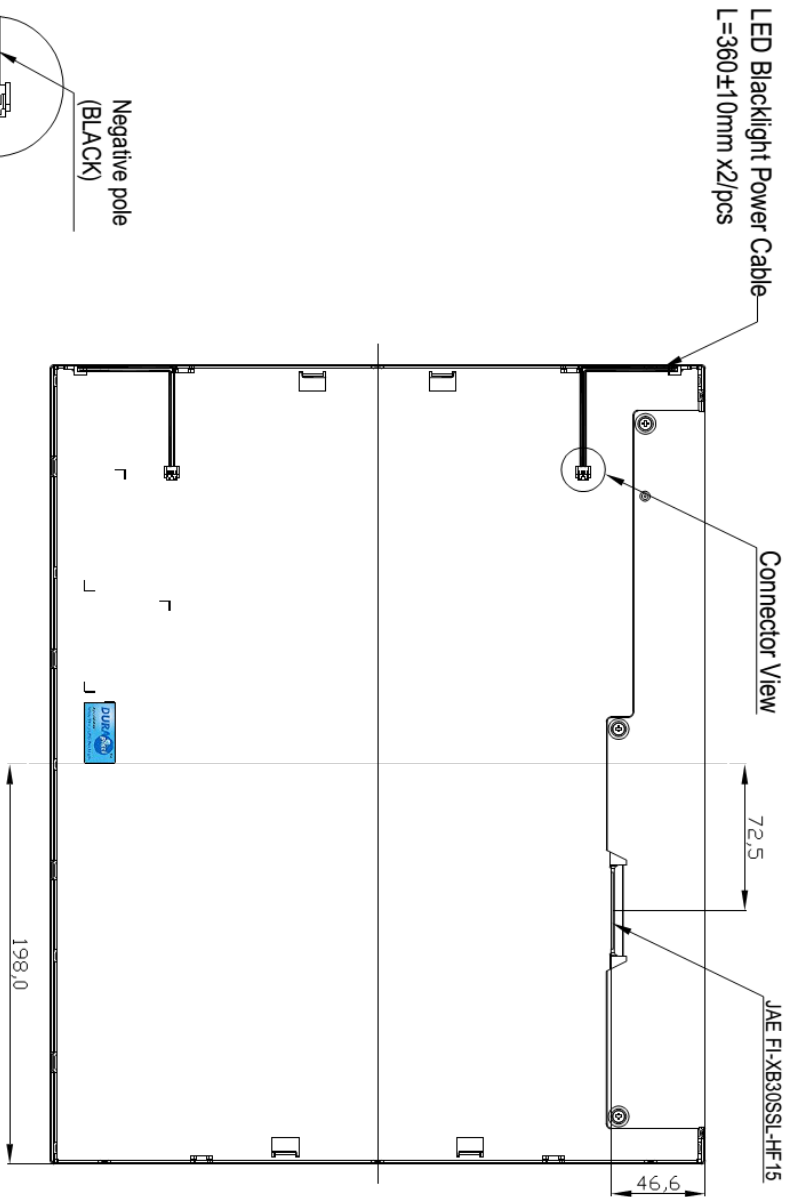
## Outline Dimensions

Unit:mm





- Note :
1. THE DIMENSION EXCLUDES DEFORMATION.
  2. MODULE THICKNESS TO BE 14.5 (MAX)
  3. LED B/L CONNECTOR : HD2505-02 OR COMPATIBLE
  4. I/F CONNECTOR TO BE JAE FI-XB30HL OR COMPATIBLE
  5. M3 USER HOLE SCREW TORQUE 5.0 kgf-cm MAX.



REV	ECN NO.	DESCRIPTION	SIGN	DATE
V0	-	正式承認發行	Penny_Chou	2010/12/10
V1	-	正式承認發行	Penny_Chou	2012/07/31
V2	-	正式承認發行	Penny_Chou	2014/07/21



APPROVED	CHECKED	DESIGNED	LEVEL	General tolerance	#	SELECT	MATERIAL	FINISH	OPTICAL DIMENSION	SPEC DIMENSION
		Penny_Chou	0 ~ 4	0.1	1	LEVEL				
			4 ~ 14	0.1	2	LEVEL				
			14 ~ 63	0.15	0.25	0.35				
			63 ~ 250	0.2	0.3	0.5				
			250 ~ 500	0.2	0.3	0.8				
			500 ~ 800	0.3	0.5	1.0				
							2			
							Date			
							2013/07/21			

UNIT	SCALE	WEIGHT	PACKAGE	GENERAL DIMENSION	3rd Angle	ORIGINAL MODEL
MM	1:1					AU1968(WT)
TITLE AU1968(WT)-Outline Dimension Drawing						
DESCRIPTION VIB.AU.1968.1600nits.V2.G190ETN01.2.P						
Drawing No: 911019688201						
Litemax LibMax Electronic Inc. A4 2-2 V2						



### Ordering Information

Part Number	Description
DLF1968-UNN-A01	19",1600nits,SXGA,LID19A,V01(5 in 1)
DLH1968-UNN-G01	19",1600nits,SXGA,LID19A,AD2662GD,DC12V,V01(5 in 1)

### Optional Accessories

Part Number	Description
840612051210	ADAPTER,AC/DC,12V/5.4A,65W,Atech OEM A065112-TDx.4P,P
810618301010	CABLE.POWER.AC.1830mm USA type
810618301090	CABLE,POWER,AC,1830mm Europe type
810618301050	CABLE.POWER.AC.1830mm UK type
810618301170	CABLE.POWER,AC,1830mm Australia type
810618301031	CABLE.POWER.AC.1830mm Japan type