



**DLF0868-E / DLH0868-E V1**  
**8.4" TFT LCD, LED Backlight 1600nits, SVGA(800x600)**

The DLF/DLH0868-E is a 8.4 inch industrial grade sunlight readable LCD, with high brightness 1600 nits for sunlight readable application. It produce sharp images, crisp text and lifelike colors. The Durapixel LED backlight technology ensures high reliability and low power consumption, suitable for outdoor application, kiosk, factory automation, military, transportation and gaming application.

**Key Features**

- Sunlight Readable
- High Brightness 1600 nits
- Resolution: 800 x 600
- Aspect Ratio: 4:3
- Wide Temperature (-20°C~70°C)
- Low Power Consumption
- BL MTBF: 70,000 hours



**Specifications**

<b>Model Name</b>	<b>DLF0868-E / DLH0868-E V1</b>
<b>Description</b>	8.4" TFT LCD, LED Backlight 1600 nits, SVGA (800x600)
<b>Screen Size</b>	8.4"
<b>Display Area (mm)</b>	170.4 (H) x 127.8 (V)
<b>Brightness</b>	1600 cd/m <sup>2</sup>
<b>Resolution</b>	800 x 600
<b>Aspect Ratio</b>	4 : 3
<b>Contrast Ratio</b>	600 : 1
<b>Pixel Pitch (mm)</b>	0.213(H) x 0.213(V)
<b>Pixel Pre Inch (PPI)</b>	119
<b>Viewing Angle</b>	160°(H), 140°(V)
<b>Color Saturation (NTSC)</b>	60%
<b>Display Colors</b>	16.2M
<b>Response Time (Typical)</b>	35ms
<b>Panel Interface</b>	LVDS
<b>AD Board Input Interface</b>	VGA, DVI-D
<b>AD Board Input Power</b>	DC12V
<b>Power Consumption</b>	6.8W (10W with AD Board)
<b>OSD Key</b>	4 Keys (Power Switch, Menu, +, -)
<b>OSD Control</b>	Brightness, Color, Contrast, Auto Turing, H/V Position...etc
<b>Dimensions (mm)</b>	203 x 142.5 x 6.1
<b>Bezel Size(U/B/L/R)</b>	6.25/5.05/18.33/10.87 mm
<b>Weight (Net)</b>	0.3kg
<b>Operating Temperature</b>	-20 °C ~ 70 °C
<b>Storage Temperature</b>	-20 °C ~ 70 °C

**DLF**= Panel+ LED Driving Board

**DLH**= Panel+ LED Driving Board + Control Board

*Specifications are subject to change without notice.  
 All brands or product names are trademarks or registered trademarks of their respective companies.*

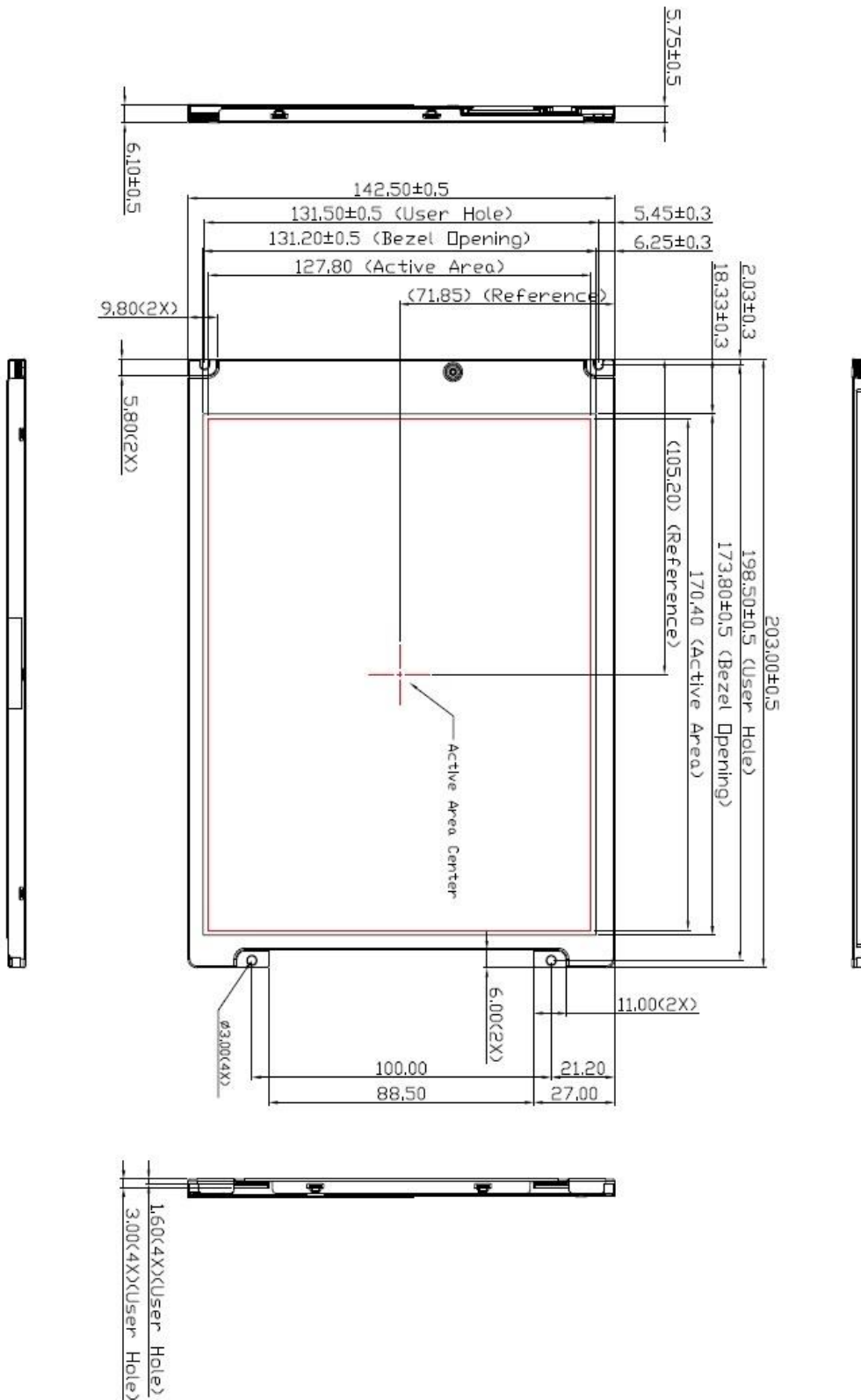


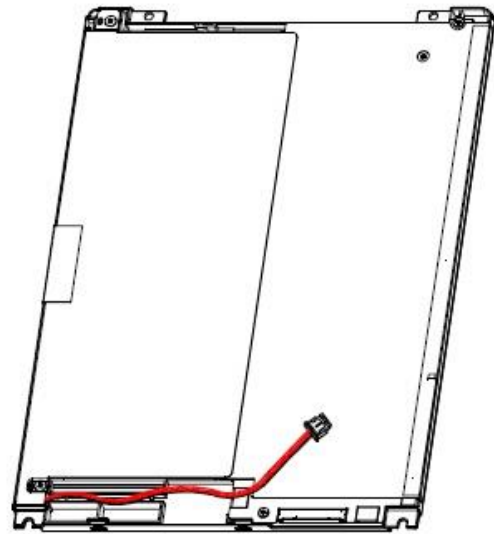
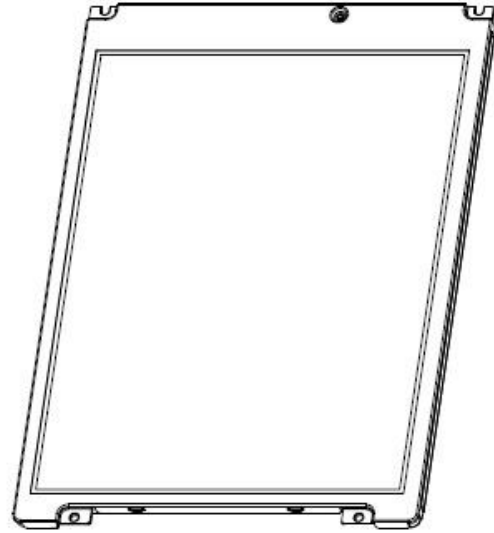
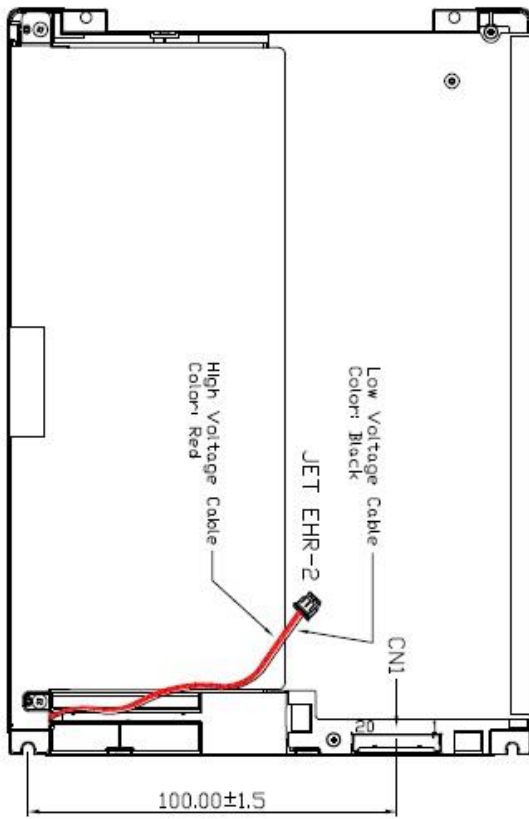
## Mechanical Drawing

### Outline Dimensions

Unit: mm

- Note:
1. Tolerance is  $\pm 0.5\text{mm}$  if not specified.
  2. Connector Model Number: MSB24013P20 or compatible.
  3. Lightbar Cable : UL1061 AWG28 L=140 $\pm$ 10mm







### Ordering Information

Part Number	Description
DLF0868-ENN-A01	8.4",1600nits,SVGA,LID08A06,V01(10 in 1)
DLH0868-ENN-I01	8.4",1600nits,SVGA,LID08.AD6038GD,DC 12V input,V01(10 in 1)

### Optional Accessories

Part Number	Description
840612051212	ADAPTER,AC/DC,12V/5A,60W.Power-Din-4P,CWT.G99-ABF060F-N022.Efficiency-level-6,R
810618301010	CABLE.POWER.AC.1830mm USA type
810618301090	CABLE,POWER,AC,1830mm Europe type
810618301050	CABLE.POWER.AC.1830mm UK type
810618301170	CABLE.POWER,AC,1830mm Australia type
810618301031	CABLE.POWER.AC.1830mm Japan type
810618301010	CABLE.POWER.AC.1830mm USA type

### By Customer Request

Glass	Tempered glass, AR coating.....
-------	---------------------------------